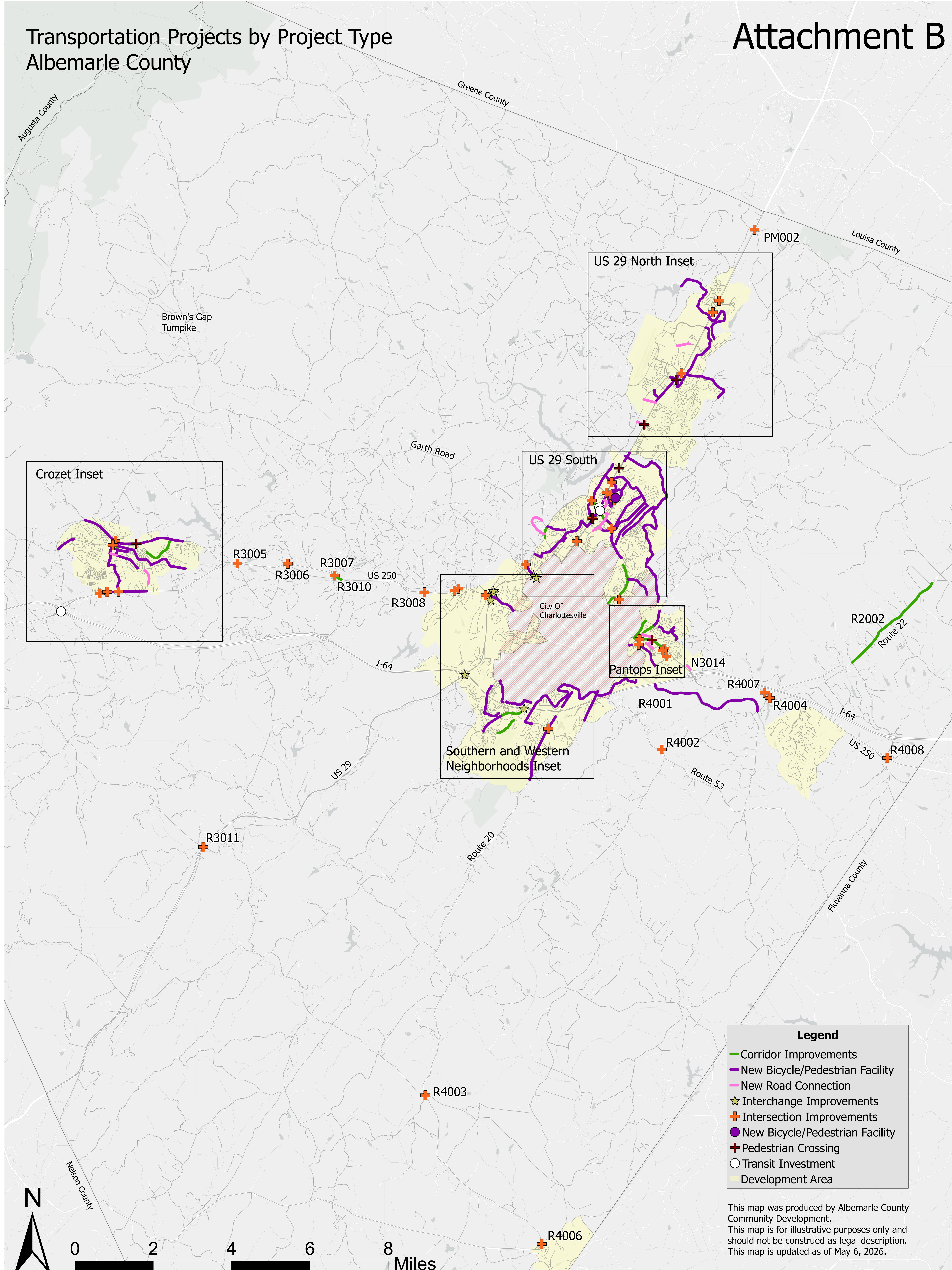


# Transportation Projects by Project Type Albemarle County

# Attachment B



**Legend**

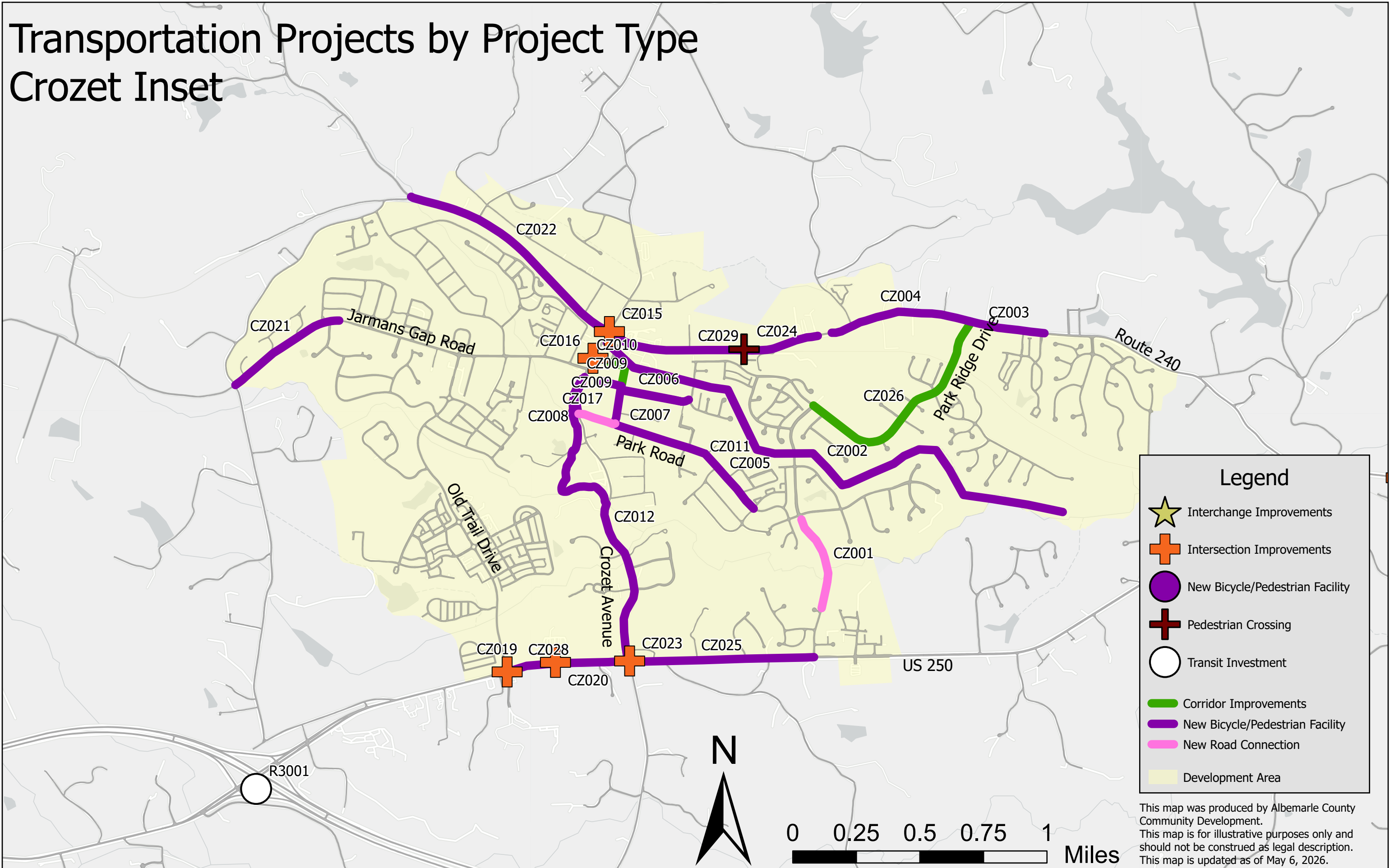
- Corridor Improvements
- New Bicycle/Pedestrian Facility
- New Road Connection
- ★ Interchange Improvements
- + Intersection Improvements
- New Bicycle/Pedestrian Facility
- + Pedestrian Crossing
- Transit Investment
- Development Area

This map was produced by Albemarle County Community Development. This map is for illustrative purposes only and should not be construed as legal description. This map is updated as of May 6, 2026.



# Transportation Projects by Project Type

## Crozet Inset



### Legend

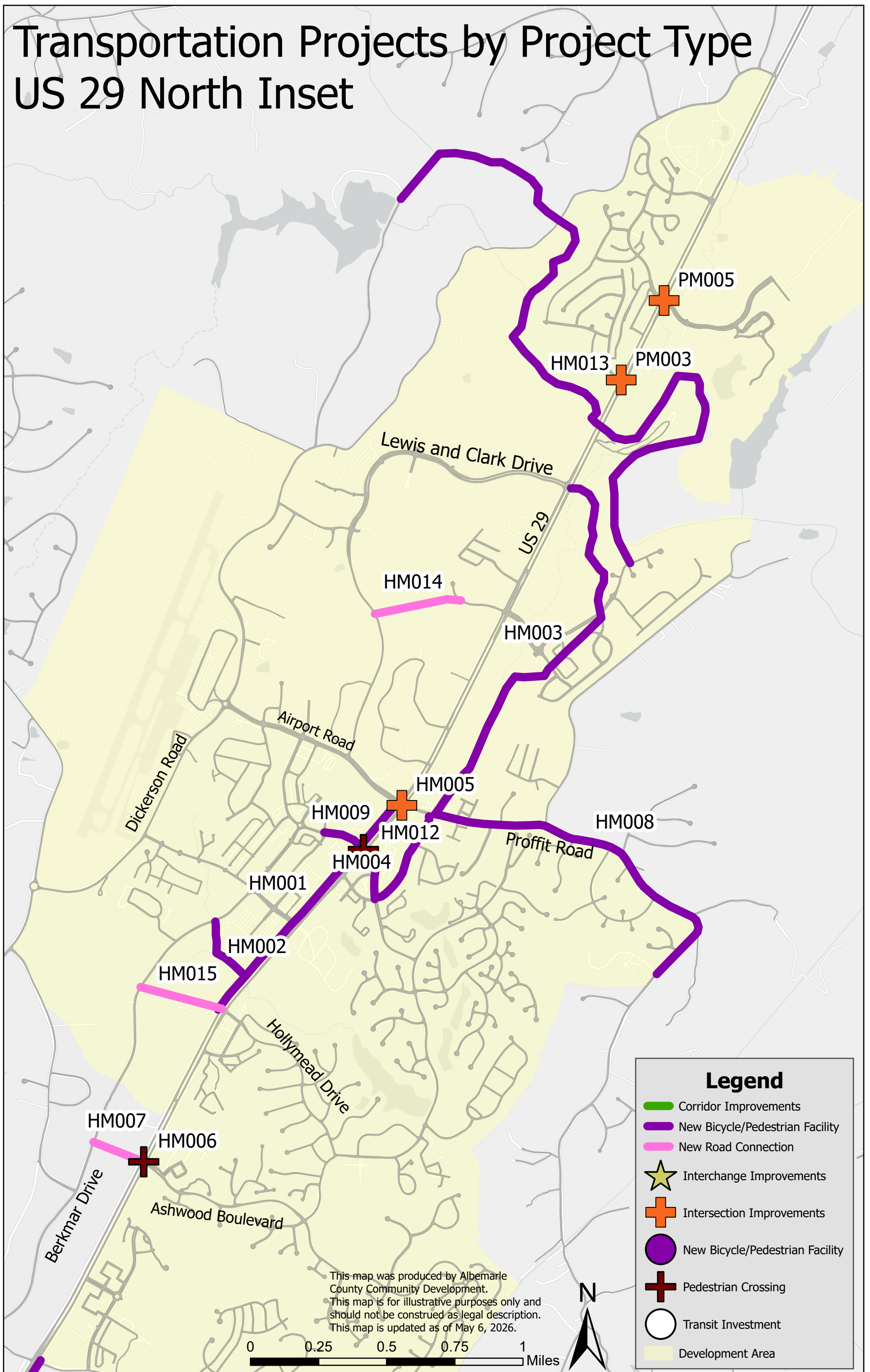
- Interchange Improvements
- Intersection Improvements
- New Bicycle/Pedestrian Facility
- Pedestrian Crossing
- Transit Investment
- Corridor Improvements
- New Bicycle/Pedestrian Facility
- New Road Connection
- Development Area

This map was produced by Albemarle County Community Development.  
 This map is for illustrative purposes only and should not be construed as legal description.  
 This map is updated as of May 6, 2026.



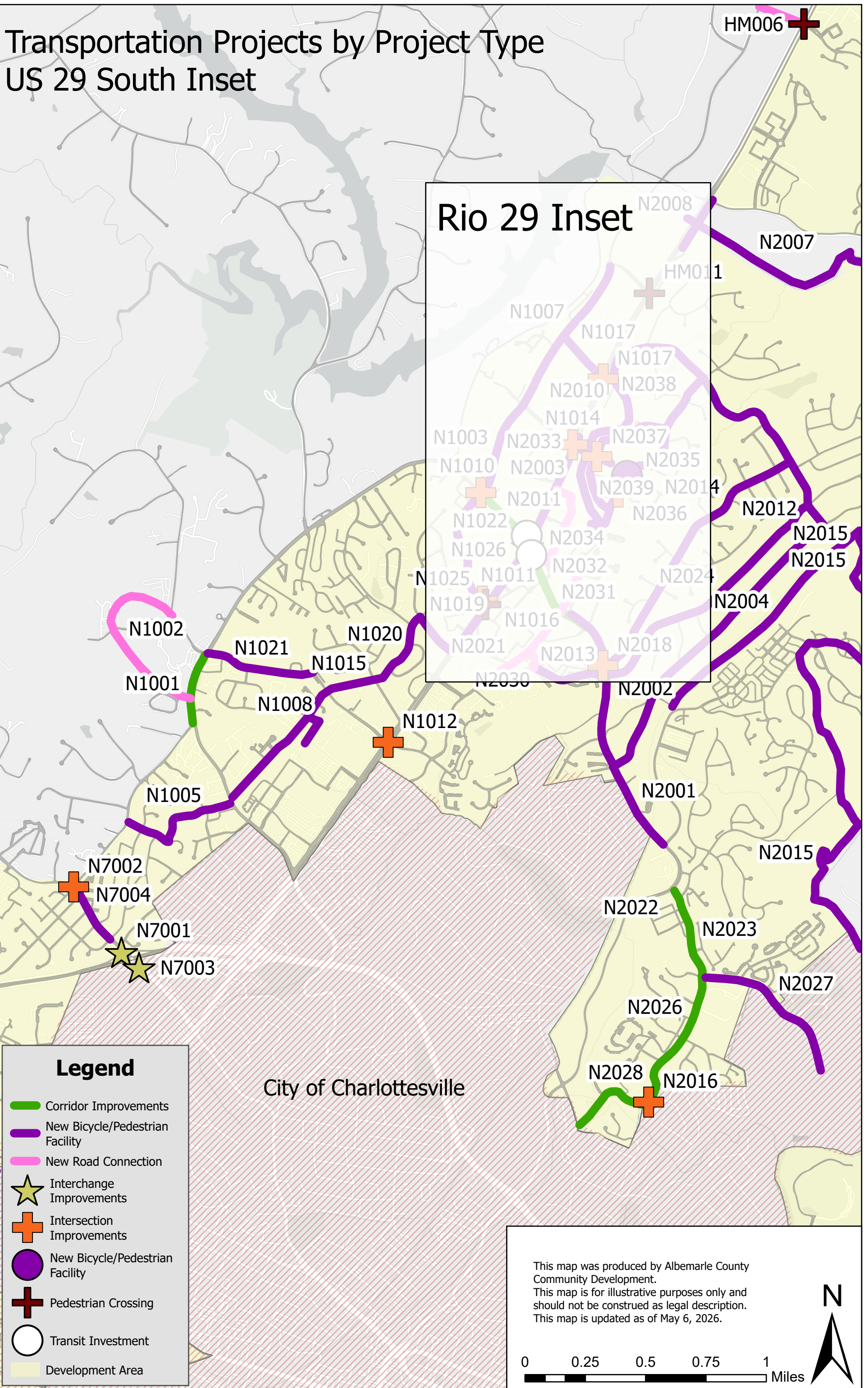
# Transportation Projects by Project Type

## US 29 North Inset



# Transportation Projects by Project Type

## US 29 South Inset



### Legend

- Corridor Improvements
- New Bicycle/Pedestrian Facility
- New Road Connection
- ★ Interchange Improvements
- + Intersection Improvements
- New Bicycle/Pedestrian Facility
- + Pedestrian Crossing
- Transit Investment
- Development Area

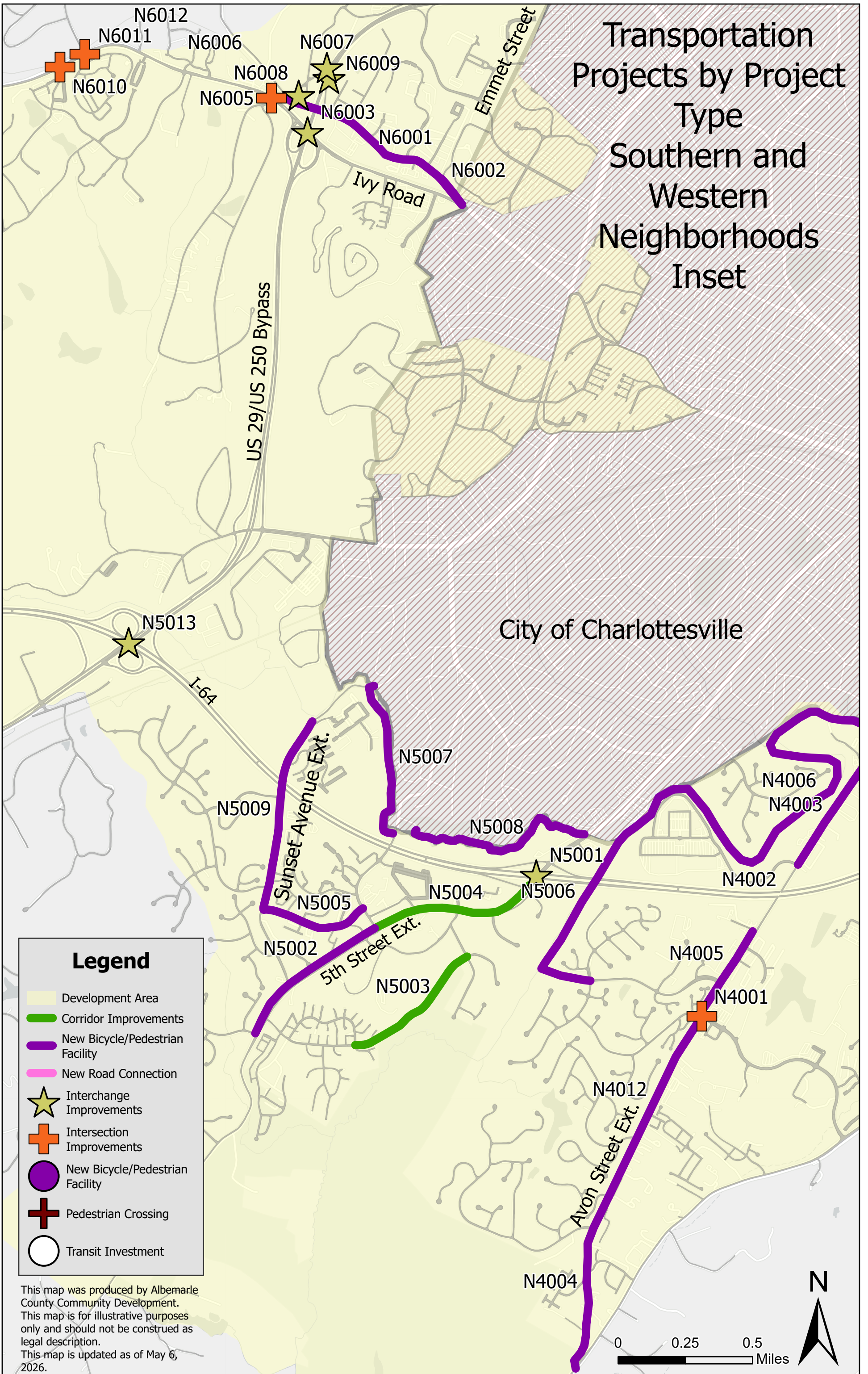
This map was produced by Albemarle County Community Development.  
 This map is for illustrative purposes only and should not be construed as legal description.  
 This map is updated as of May 6, 2026.

0 0.25 0.5 0.75 1 Miles





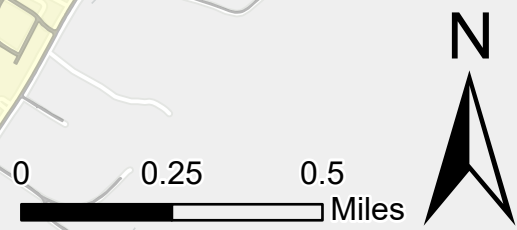
# Transportation Projects by Project Type Southern and Western Neighborhoods Inset



**Legend**

- Development Area
- Corridor Improvements
- New Bicycle/Pedestrian Facility
- New Road Connection
- Interchange Improvements
- Intersection Improvements
- New Bicycle/Pedestrian Facility
- Pedestrian Crossing
- Transit Investment

This map was produced by Albemarle County Community Development. This map is for illustrative purposes only and should not be construed as legal description. This map is updated as of May 6, 2026.



# Transportation Projects by Project Type

## Pantops Inset

**Legend**

- Corridor Improvements
- New Bicycle/Pedestrian Facility
- New Road Connection
- ★ Interchange Improvements
- + Intersection Improvements
- New Bicycle/Pedestrian Facility
- + Pedestrian Crossing
- Transit Investment
- Development Area

This map was produced by Albemarle County Community Development. This map is for illustrative purposes only and should not be construed as legal description. This map is updated as of May 6, 2026.

